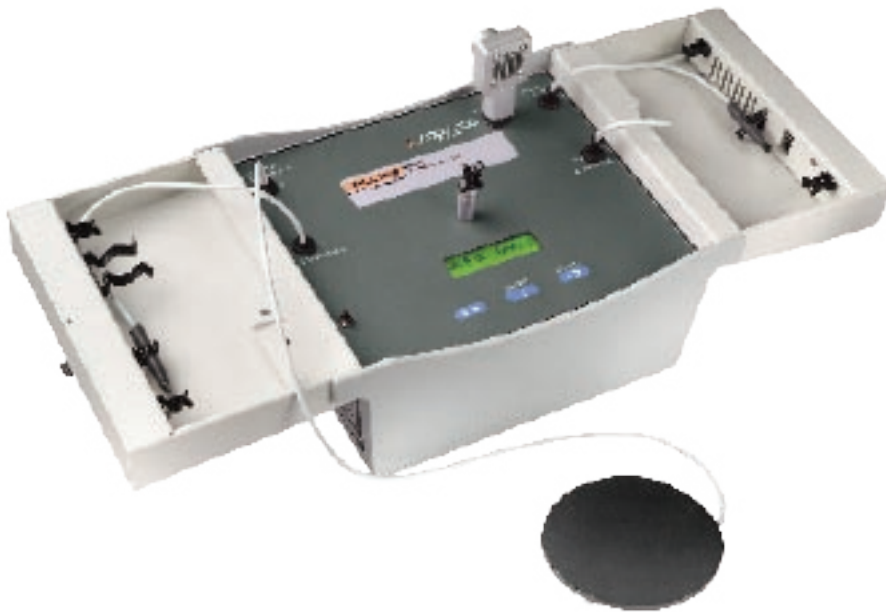


INCU™

Incubator Analyzer



Technical Data

Faulty incubator controls jeopardize the health of critical-care babies, lengthen hospital stays, and drive up healthcare costs, making thorough incubator testing essential.

The INCU™ Incubator Analyzer is the only device on the market today that accurately measures seven key parameters at once in a single, integrated unit, saving time and ensuring more-accurate results.

Designed around AAMI and IEC standards that specify incubator sound levels and thermal characteristics, the INCU measures airflow, relative humidity, sound, and four independent temperatures. Adjustable measurement intervals let technicians configure the unit to meet their facilities' testing requirements. Technicians are free to do other work while the device collects and records data.

The INCU is compatible with both closed, forced-convection incubators, and open infant warmers, including transportable, air-controlled, and baby-controlled units. Lightweight and portable, the INCU fits inside the incubator and operates as a stand-alone device or with a personal computer for automated testing. In stand-alone mode, the INCU displays measured parameters repeatedly in cycle fashion.

INCU software lets technicians upload setup parameters and download the test results to a PC file, or print the data in reports with full-color charts and graphs.

Key Features

- Simultaneous measurement of humidity, airflow, sound, and 4 independent temperatures
- 24-hour continuous testing (battery); 35-hour continuous testing (main power)
- Battery operated
- Adjustable measurement intervals
- Compatible with closed, forced-convection incubators and open infant warmers
- Stand-alone measurement or automated testing with PC
- Windows® compatible INCU software for easy data collection, analysis, and documentation
- Numerical and full-color graphical reports

Technical Specifications

Power Supply

Maximum Over-Voltage: 264 VAC
Input Voltage Range: 100 VAC to 240 VAC
Input Frequency Range: 47 Hz to 63 Hz
Power Consumption: < 60 V A
Fuse Rating: 2A Slow Blow
Battery: Rechargeable sealed lead-acid type NP7-6 YUASA, 6 V, 7 Ah; operates for 24 hours continuously; low-battery alert
Charger: 600 mA minimum, 8 VAC-DC (charger must be agency-approved, depending on the country.)
Dimensions: 151 mm x 34 mm x 101 mm

Sound Level

Measuring Range: 30 dbA to 80 dbA
Resolution: 0.1 dbA
Accuracy: + 5 dbA @ 30 dbA to 80 dbA

Relative Humidity (without condensation)

Measuring Range: 0 % to 100 % RH, non-condensing
Resolution: 0.1 % RH
Accuracy: ± 5 % RH for 0 % to 90 % RH at 77 °F to 104 °F (25 °C to 40 °C) or ± 5.3 % RH for 0 % to 100 % RH at 77 °F to 104 °F (25 °C to 40 °C)

Temperature Measurement

Measuring Range: 41 °F to 158 °F (5 °C to 70 °C)
Resolution: 32 °F (0.1 °C)
Accuracy: + 0.9 °F (+ 0.5 °C) + 1 LSB of range from 77 °F to 104 °F (25 °C to 40 °C)
Conduction: 1 sensor in contact with mattress
Convection (inside the incubator): 3 sensors (T1, T3, T4)
Convection (inside or outside the incubator): 1 sensor (T2)
Radiation: 1 sensor for radiation head that can be used also for external temperature

Airflow

Measurement Range: 0.1 m/s to 0.7 m/s
Resolution: 0.01 m/s
Accuracy: from 0.1 m/s to 0.5 m/s reading ± 0.1 m/s at temperature 77 °F to 104 °F (25 °C to 40 °C) and humidity 50 % RH ± 15 % RH

Measurement Interval

Via PC: Adjustable from 1 minute to 10 minutes

Internal Memory

Capacity: 1470 measurements (210 records of 7 parameters)

Controls

Display: 2 in H x 16 in W super twist LCD

Temperature

Storage: -4 °F to 122 °F (-20 °C to 50 °C)
Operating: 50 °F to 104 °F (10 °C to 40 °C)

Dimensions

10.6 in L x 7.8 in W x 5.5 in H
(27 cm L x 20 cm W x 14 cm H)

Weight

6.6 lb (3 kg)

FLUKE®

Biomedical

Ordering Information

Model

2250148: INCU-UNIPOWER

Standard Accessories

2206965: User/service manual
2248900: Soft-sided carrying case
2239025: Airflow sensor
2391761: Universal AC battery charger with worldwide mains adapter set
2391866: Serial cable DB9F to DB9F
2391789: Serial adapter DB9M to DB9M
2213928: Outside-temperature probe holder
2239002: Adapter for radiant infant warmer assembly
2213919: INCU PC software (1 CD)

About Fluke Biomedical

Fluke Biomedical is the world's leading manufacturer of quality biomedical test and simulation products. In addition, Fluke Biomedical provides the latest medical imaging and oncology quality-assurance solutions for regulatory compliance.

Today, biomedical personnel must meet the increasing regulatory pressures, higher quality standards, and rapid technological growth, while performing their work faster and more efficiently than ever. Fluke Biomedical provides a diverse range of software and hardware tools to meet today's challenges.

Fluke Biomedical Regulatory Commitment

As a medical device manufacturer, we recognize and follow certain quality standards and certifications when developing our products. We are ISO 9001 certified and our products are:

- FDA Compliant
- CE Certified, where required
- NIST Traceable and Calibrated
- UL, CSA, ETL Certified, where required

Fluke Biomedical.

Better products. More choices. One company.

Fluke Biomedical

PO Box 9090, Everett, WA 98206-9090 USA

Fluke Biomedical Europe AS

Vegamot 8, N-7048 Trondheim, Norway

For more information, contact us:

In the U.S.A. (800) 648-7952 or
Fax (425) 446-5629
In Europe/M-East/Africa +47 73954700 or
Fax +47 73954701
From other countries +1 (425) 347-6100 or
Fax +1 (425) 446-5629
Email: sales@flukebiomedical.com
Web access: <http://www.flukebiomedical.com>

©2006 Fluke Biomedical. All rights reserved.
Specifications subject to change without notice.
Printed in U.S.A.
LIT037